

**Subject:** Velocity Filter Pump Motor Notification

**Date:** 06/12/23

**Region:** Global

**Model Affected:** Velocity OXE100 (open) and PXE100 (pressure) fryer.

**Summary**

As part of continuous improvement, Henny Penny decided to migrate to a new face mount filter pump and motor for Velocity fryers. Before we could communicate the change, an issue with fryers using bulk oil systems was discovered. To be safe, we stopped using the face mount filter pump and motor until further testing with the manufacturer can be completed. Starting immediately, when replacing any filter pump or motor on any OXE100 or PXE100 fryer, use the flange mount pump and motor part numbers as shown below.

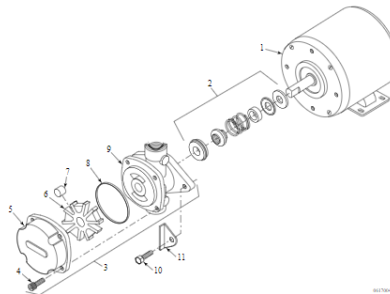
**Part Numbers**

**IMPORTANT:** Parts from the two different designs are not interchangeable.

- If a flange mounted filter pump and motor, replace individual parts as needed from the below list.
- If a new face mount filter pump and motor, replace the complete assembly by ordering the flange mount pump, motor, and seal kit from the below list.

Refer to Parts.hennypennyhelp.com here: <https://parts.hennypennyhelp.com/help/Velocity/PXE-100/Service/Parts/PXE-100-Filtr-Pump-Mtr-Assy.htm>

Flange Mount Filter Pump Motor Assembly



Item No.	Part No.	Description	Qty.	Stocking Level
1	<a href="#">67583</a>	Motor, 1/2 HP, 60 Hz	1	A
1	163147	Motor, 1/2 HP, 50 Hz (On CE units pre-Sept 2016 replace condensate tank with 163939)	1	A
2	<a href="#">17476</a>	Seal kit	1	B
3	162497	8 GPM pump assembly	1	

**Warranty**

**IMPORTANT:** Henny Penny is not proactively replacing the face mount filter pump and motor. Replacement parts include a 90-day parts warranty from the date of install.

**Questions**

For questions, please contact: [partsdepartment@hennypenny.com](mailto:partsdepartment@hennypenny.com)